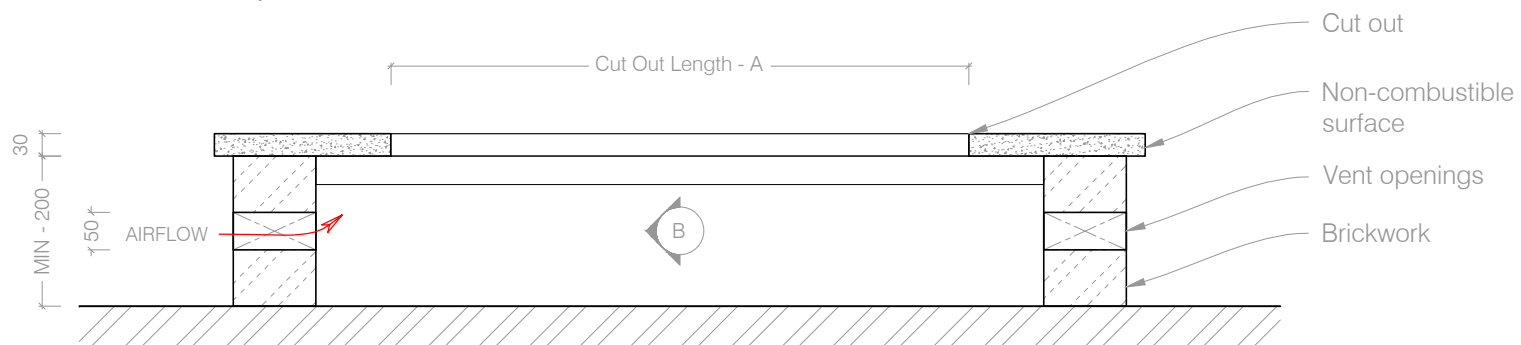
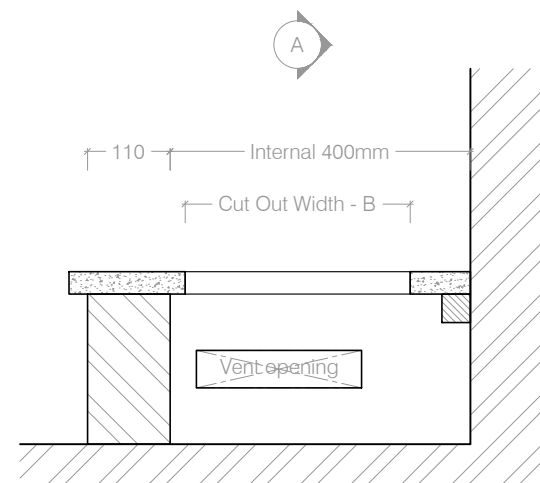


Top View



Sectional Front View A



Sectional Side View B

NOTE:

- Vent openings can be anywhere in the support structure.
- Minimum of 200mm space required below the cutout in the mounting surface for internal components.
- Mounting surface that the burner is being mounted into must be of a non-combustible material.
- Installation must comply with the all relevant building regulations of the area where the installation is to occur.
- NB this is merely a typical installation, consult a specialist builder for alternative possibilities.

BEAUTY FIRES™

www.beautyfires.com

Drop In Flueless Gas Burners Brick Support Structure

© This drawing is copyright and remains the property of Beauty Fires.
It may not be retained, copied or used without written consent.

Product Code	Cut Out Size	Product Size	Consumption	Output
BFGAS01	(A)770 x (B)200 mm	(C)800 X (D)220 mm	425 g/hour	6,5 Kw
BFGAS02	(A)970 x (B)200 mm	(C)1000 X (D)220 mm	675 g/hour	10 Kw
BFGAS03	(A)1170 x (B)200 mm	(C)1200 X (D)220 mm	675 g/hour	10 Kw
BFGAS04	(A)1720 x (B)200 mm	(C)1750 X (D)220 mm	1355 g/hour	20 Kw
BFGAS05	(A)1970 x (B)200 mm	(C)2000 X (D)220 mm	1355 g/hour	20 Kw